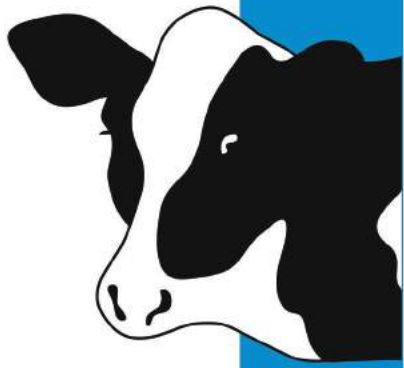


 Krishna Allied Industries Pvt. Ltd.



Milk Can



Presenting...

THE WORLD'S LARGEST SELLING SS MILK CANS

Welcome to the world of KRISHNA - the pioneer in Milk Management System. Offering the widest range of Stainless Steel products manufactured specially for Clean Milk Handling.

Offering the complete range of quality products, no dairy can do without:

- Stainless Steel Milk Can (50L, 40L, 30L, 25L, 20L, 10L, 5L)
- SS Milking Pail (20L, 15L, 10L, 8L, 5L)
- SS Milk Collection Tray
- SS Milk Measures (2L, 1L, 500ml, 200ml, 100ml)
- SS Milk Funnel (with Strainer)
- SS Sample Bottle Stand & Bottles
- SS Can Plunger
- SS Sampler
- SS Lactometer Jar
- SS Floor Tiles



Stainless Steel Milk Can
(50L, 40L, 30L, 20L)

Take a glimpse of the unique features of our products

Strong & Sturdy Body

- It uses food grade AISI 304 (18/8) Stainless Steel which has higher strength-weight ratio than any other normally used material. Krishna range of products have greater tensile strength, yield point, ductility and hardness than any other material. Special manufacturing techniques ensure longer operational durability in all respects and provides longer life with lower maintenance cost.

Easy Cleaning

- Its smooth, 150 grit sanitary finish, polished surface enables easy and hygienic cleaning.

Preserves Milk Quality

- Krishna products keep milk cooler for longer duration thus preserving milk quality. This is due to the fact that Stainless Steel has lower thermal conductivity than Aluminum.

Corrosion Resistant

- Product's resistance to mechanical deformation, abrasion and corrosion, makes it the ideal product to be used without any worries in the tough dairy environment. It doesn't require any protective coating as our products are corrosion resistant for life.

Crack Resistant

- Specially processed such that products are highly crack resistant.

Specially Designed

- Easy to handle, Milk Cans easily pass through Can Washer and Conveyor System.

Cost Effective

- In spite of offering a world of advantages, our products are surprisingly very Cost Effective.



Stainless Steel
Milk Measures



Stainless Steel Milk
Collection Tray

Krishna range of Stainless Steel Milk Cans, the better alternative to Aluminum Cans. A summary of the tests and their results done on Aluminum & Stainless Steel Milk Cans are given below:

Sr.	Parameters	Sumo SS Can	Aluminum Can
1.	Tensile Strength (Mg./ 50mm)	2490.50	1152.00
2.	Thermal Conductivity (time taken to have a temp. gain of 3 deg. of the canned content)	57 min.	43 min.
3.	Brimful Capacity (Ltrs.)	42	43
4.	Rain Test (Volume of water sprayed: 100-/20 Ltrs/m2/hr for 30 min. Observation done for amount of water seepage found inside the can.)	0 ml.	10 ml.
5.	Handle Pull Test (At 150 kg. load applied for 5 min.)	No damage	No damage
6.	Drop Test (Drop height: 1.25 mtrs. Only one drop)	Slight denting to the Base Ring and no other damage	Slight denting to

Source: Indian Institute of Packaging, Mumbai.

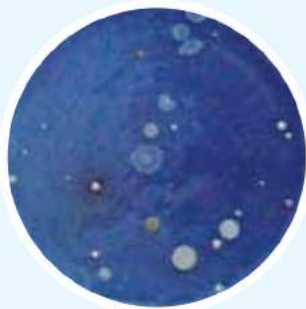


Stainless Steel Funnel with Strainer

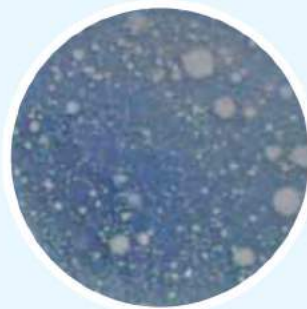


Stainless Steel Sample Bottle Stand & Bottles

Cleaning & Sanitation Efficiency of Milk Can assessed by Rinse Test



SS CAN (OLD)



ALUMINUM CAN (OLD)

No.	Parameters	Old SS Can	Old Aluminum Alloy Can
1.	Average Colony count of Washed Can (per lit. capacity)	Range: 175-338 Average: 287	Average: 960
2.	Visual Observation	Apparent clean ability was superior	Old Aluminum Cans showed white patches on both inner and outer surface



Stainless Steel Plunger, Sampler & Lactometer Jar



Lockable
Milk Cans



Stainless Steel
Milk Cans



Stainless Steel Milking Pail
(Bucket)

Technical Specification of Milk Cans

Sr No.	Particulars	Base Diameter (mm)	Height		Weight (kgs)
			with Lid (mm)	without Lid (mm)	
1.	20 Ltrs Can	281	470	450	5.200
2.	25 Ltrs Can	281	545	525	5.590
3.	30 Ltrs Can	346	510	486	6.500
4.	40 Ltrs Can	346	615	596	8.300
5.	50 Ltrs Can	346	730	705	9.000

**Specifications & Dimensions are subject to change due to our policy of continuous improvement*

Add strength to your Flooring with Stainless Steel Floor Tiles..

an ideal replacement to Cast Iron & Mild Steel Floor Tiles

- Floor Cleaning becomes more effective
- Resistant to acid & alkali, which makes them corrosion resistant
- Strong enough to withstand rough handling
- Easy to Install
- Last long without any maintenance
- Extremely Cost Effective

Usages:

Anywhere where an hygienic, hard-wearing, floor finish is required such as:

Commercial Kitchens, Dairy Industry, Food and Beverage Processing Plants, Wineries, Pharmaceutical Production areas & Fish and Meat Plants etc.



Stainless Steel
Floor Tiles

Material:	Austenitic Stainless Steel
Dimensions (mm):	250(L) x 250(B) x 20(H)
Weight:	1 Kg.

ki **Krishna Allied Industries Pvt. Ltd.**
Manufacturer & Exporter of Dairy & Kitchen equipments

Head Office:

9/25 A, Chandawadi, 138 CP Tank Road, Mumbai – 400 004. INDIA
Tel: +91 22 4220 3800-99 (100 lines) Fax: +91 22 2380 3890 / 4220 3888
Email: sales@dairyequipments.com • Website: www.dairyequipments.com

Works:

121/20 G.I.D.C Kalol, District Panchmahal, Gujarat - 389 330.
Tel: +91 2676 235452 Fax: +91 2676 225296